

For Sale

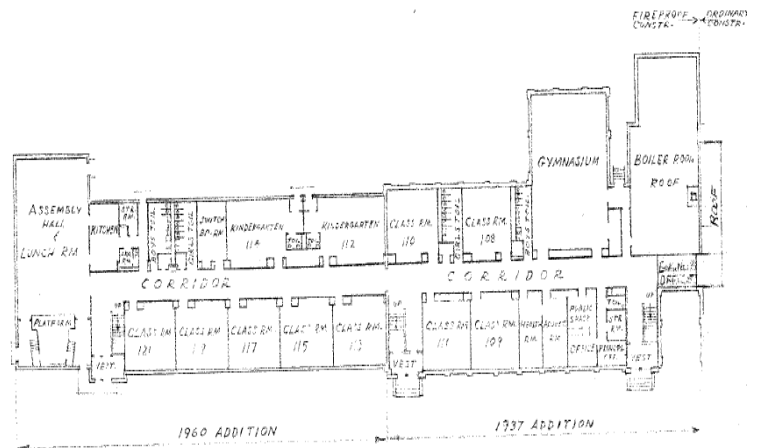
**CBRE**

# 6059 S. Wabash Chicago, IL

Former Ross School

## Property Information

- Building SF: 185,000 SF
- Land SF: 118,976 SF
- PINS: 20-15-307-009; 20-15-307-010; 20-15-307-022; 20-15-307-023; 20-15-307-001; 20-15-307-011; 20-15-307-012
- Zoning: RT-4
- Neighborhood: Washington Park
- Ward 20 / Alderman Jeanette Taylor



[Click Here for Bid Information](#)

## Contact Us

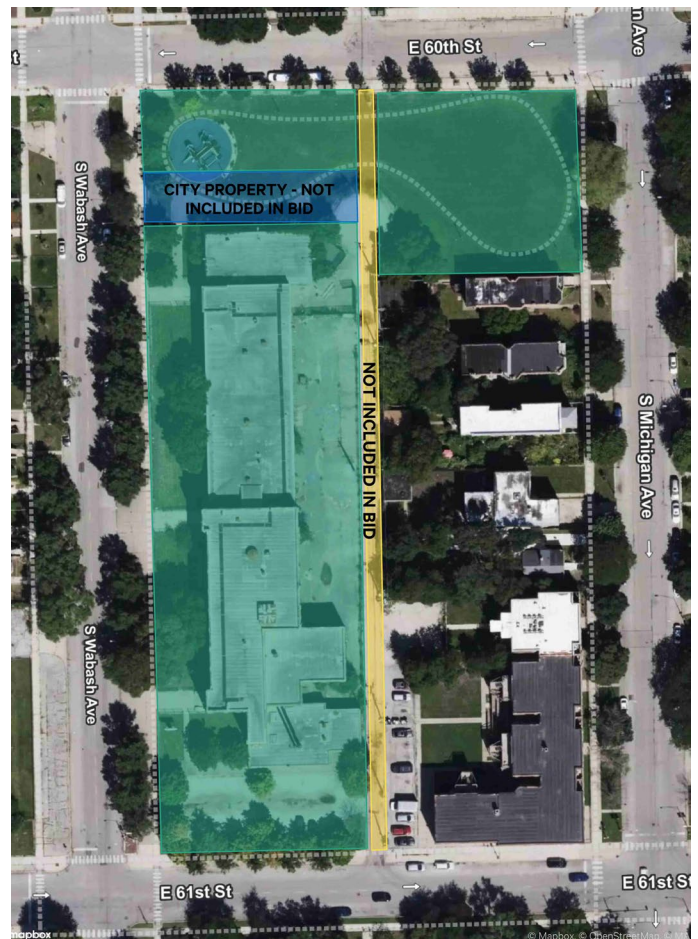
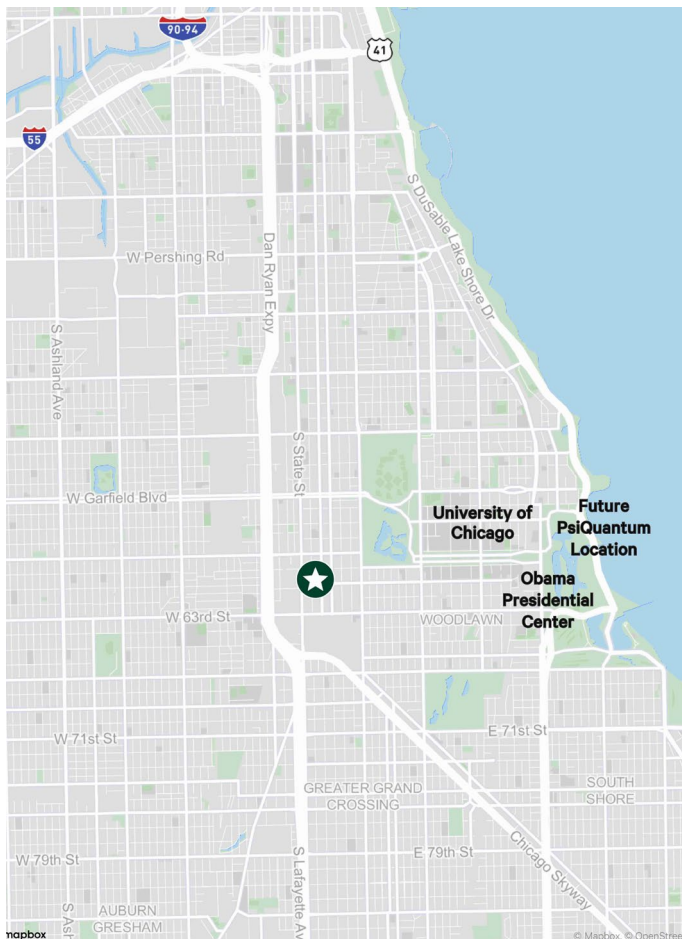
Mike Nardini  
312 935 1030  
[Mike.Nardini@cbre.com](mailto:Mike.Nardini@cbre.com)

Nicole Mentone  
312 297 7658  
[Nicole.mentone@cbre.com](mailto:Nicole.mentone@cbre.com)

Mitch Adams  
312 935 1469  
[Mitch.adams@cbre.com](mailto:Mitch.adams@cbre.com)

FIRST FLOOR PLAN  
SCALE 1"=50'-0"

# 6059 S. Wabash Chicago, IL



## Contact Us

**Mike Nardini**  
312 935 1030  
[Mike.Nardini@cbre.com](mailto:Mike.Nardini@cbre.com)

**Nicole Mentone**  
312 297 7658  
[Nicole.mentone@cbre.com](mailto:Nicole.mentone@cbre.com)

**Mitch Adams**  
312 935 1469  
[Mitch.adams@cbre.com](mailto:Mitch.adams@cbre.com)

© 2025 CBRE, Inc. All rights reserved. This information has been obtained from sources believed reliable but has not been verified for accuracy or completeness. CBRE, Inc. makes no guarantee, representation or warranty and accepts no responsibility or liability as to the accuracy, completeness, or reliability of the information contained herein. You should conduct a careful, independent investigation of the property and verify all information. Any reliance on this information is solely at your own risk. CBRE and the CBRE logo are service marks of CBRE, Inc. All other marks displayed on this document are the property of their respective owners, and the use of such marks does not imply any affiliation with or endorsement of CBRE. Photos herein are the property of their respective owners. Use of these images without the express written consent of the owner is prohibited.