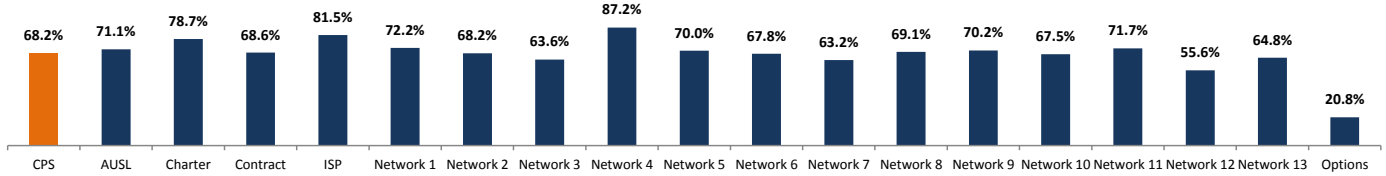


Chicago Public Schools had 23017 graduates\* in SY2017 and 68% of those students enrolled in college, compared to 59.8% in SY2016.

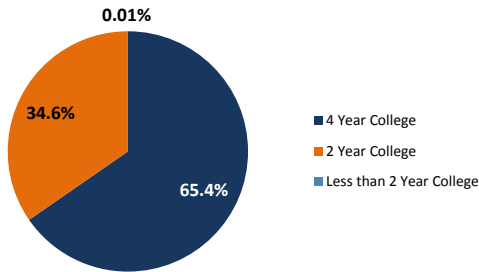
College Enrollment Summary - SY2017  
District & Network Rates



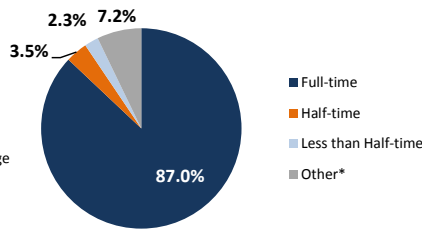
\*CPS students who graduated between October 1, 2016 and September 30, 2017 are included in this report. College enrollees are graduates that enrolled in college the fall or spring of the 2017-2018 school year.

College Information - N=15694 Enrollees

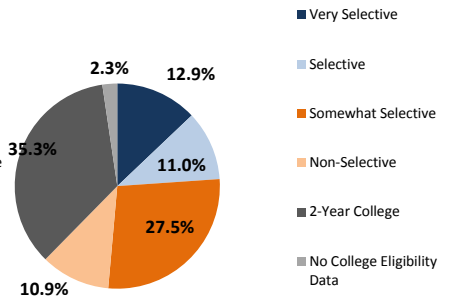
Enrollees by Type of College



Enrollees by Enrollment Status



Barron's Competitiveness Levels\*\*



Enrollment by Public vs. Private College



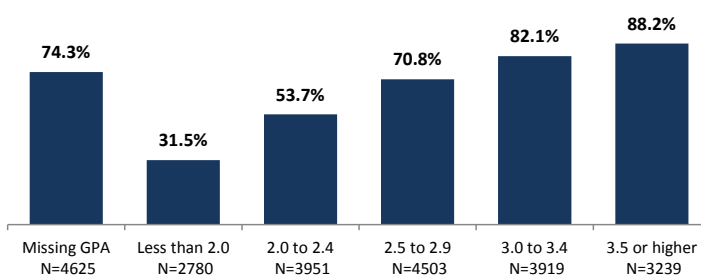
Enrollment by Location



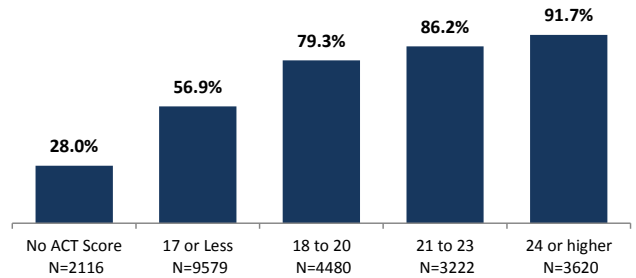
\*\*Barron's rankings of competitiveness are used to determine how rigorous the admissions process is for a college. A small number of students that enrolled in a 4-year college did not have a Barron's competitive rating. Therefore, the number across competitive levels may not always add up to the number enrolled in a 4-year college.

Enrollee Demographics - N varies by category\*\*\*

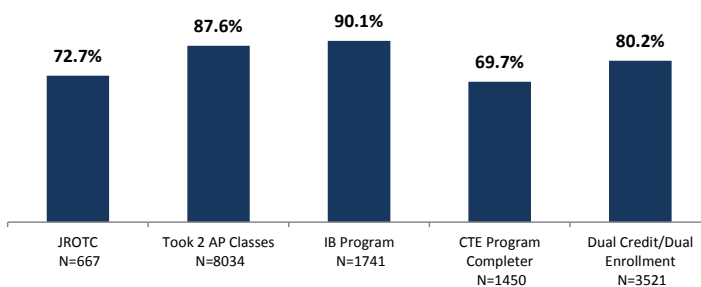
Enrollment by GPA



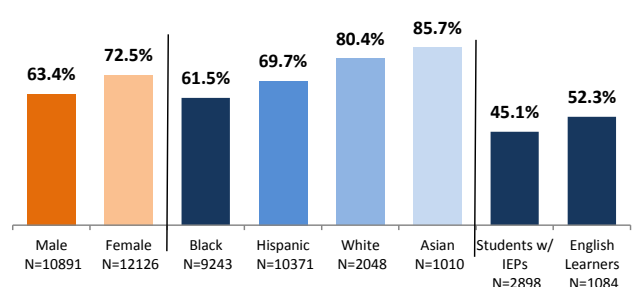
Enrollment by ACT Score



Enrollment by Class/Program Participation



Enrollees by Demographics



\*\*\*The Ns in this section represent the number of graduates for a specific demographic group. The %s reflect the % of college enrollees for that group.

2017 College Enrollment Summary Data

Chicago Public Schools	# Students	%
Graduates	23,017	
Enrolled in College	15,694	68.2%
Not Enrolled in College	7,323	31.8%

Enrollees by Semester	# Students	%
Total Enrollees	15,694	
Fall	14,984	95.5%
Spring	710	4.5%

Note: In 2018, graduates enrolling in spring are included in the college enrollment rate.

Enrollees by Type of College	# Enrollees	% Enrollees
4 Year College	10,258	65.4%
2 Year College	5,435	34.6%
Less than 2 Year College	1	0.01%

Enrollees by Public vs. Private College	# Enrollees	% Enrollees
Public	11,243	71.6%
Private	4,451	28.4%
HBCU	783	5.0%

Enrollees by Enrollment Status	# Enrollees	% Enrollees
Full-time	13,660	87.0%
Half-time	553	3.5%
Less than Half-time	356	2.3%
Other*	1,125	7.2%

Enrollees by Location	# Enrollees	% Enrollees
In IL	12,228	77.9%
Not in IL	3,465	22.1%

Barron's Selectivity Levels**	# Enrollees	% Enrollees
Very Selective	2,026	12.9%
Selective	1,726	11.0%
Somewhat Selective	4,317	27.5%
Non-Selective	1,717	10.9%
2-Year College	5,540	35.3%
No College Eligibility Data	368	2.3%

Enrollees by GPA	# Graduates	# Enrollees	% of Grads Enrolled
Missing GPA	4,625	3,438	74.3%
Less than 2.0	2,780	875	31.5%
2.0 to 2.4	3,951	2,121	53.7%
2.5 to 2.9	4,503	3,187	70.8%
3.0 to 3.4	3,919	3,216	82.1%
3.5 or higher	3,239	2,857	88.2%

Enrollees by ACT Score	# Graduates	# Enrollees	% of Grads Enrolled
No ACT Score	2,116	593	28.0%
17 or Less	9,579	5,450	56.9%
18 to 20	4,480	3,554	79.3%
21 to 23	3,222	2,776	86.2%
24 or Higher	3,620	3,321	91.7%

Enrollees by Class/Program	# Graduates	# Enrollees	% of Grads Enrolled
JROTC	667	485	72.7%
Took 2 AP Classes	8,034	7,036	87.6%
IB Program	1,741	1,568	90.1%
CTE Program Completer	1,450	1,011	69.7%
Dual Credit/Dual Enrollment	3,521	2,824	80.2%

Enrollees by Gender/IEP/EL	# Graduates	# Enrollees	% of Grads Enrolled
Male	10,891	6,905	63.4%
Female	12,126	8,789	72.5%
Students w/ IEPs	2,898	1,306	45.1%
English Learners	1,084	567	52.3%

\*"Other" enrollment status includes: Leave of Absence, Withdrawn, Deceased, Unknown

\*\*For 4 year colleges - based on 2005 Barron's rankings

2017 College Enrollment Summary Data by Student Demographics

Enrollees by Ethnicity/Gender	# Graduates	# Enrollees	% of Grads Enrolled	# Male Graduates	# Male Enrollees	% of Male Grads Enrolled	# Female Graduates	# Females Enrollees	% of Female Grads Enrolled
Black	9,243	5,686	61.5%	4,293	2,410	56.1%	4,950	3,276	66.2%
Hispanic	10,371	7,228	69.7%	4,936	3,186	64.5%	5,435	4,042	74.4%
White	2,048	1,647	80.4%	991	761	76.8%	1,057	886	83.8%
Asian	1,010	866	85.7%	492	415	84.3%	518	451	87.1%

Enrollees by Ethnicity/Gender	Enrollees at 4-yr Colleges		Enrollees at Colleges Outside Illinois		Full-Time Enrollees		Enrollees at Selective or Very Selective Schools	
	#	%	#	%	#	%	#	%
Black N=5686	3,959	69.6%	1,839	32.3%	4,848	85.3%	906	15.9%
Male N=2410	1,650	68.5%	825	34.2%	2,032	84.3%	349	14.5%
Female N=3276	2,309	70.5%	1,014	31.0%	2,816	86.0%	557	17.0%
Hispanic N=7228	4,145	57.3%	848	11.7%	6,240	86.3%	1,560	21.6%
Male N=3186	1,736	54.5%	371	11.6%	2,672	83.9%	639	20.1%
Female N=4042	2,409	59.6%	477	11.8%	3,568	88.3%	921	22.8%
White N=1647	1,263	76.7%	572	34.7%	1,518	92.2%	801	48.6%
Male N=761	540	71.0%	231	30.4%	681	89.5%	332	43.6%
Female N=886	723	81.6%	341	38.5%	837	94.5%	469	52.9%
Asian N=866	688	79.4%	120	13.9%	811	93.6%	369	42.6%
Male N=415	319	76.9%	44	10.6%	381	91.8%	151	36.4%
Female N=451	369	81.8%	76	16.9%	430	95.3%	218	48.3%

## Top 100 Colleges Attended by 2017 CPS Graduates

## Top 50

Name of College	# of Graduates Enrolled	% of All College Enrollees	Type of College	Selectivity Level	Graduation Rate of College*
UNIVERSITY OF ILLINOIS AT CHICAGO	1539	9.8%	4-Year	Somewhat Selective	58%
CITY OF CHICAGO - HAROLD WASHINGTON COLL	1280	8.2%	2-Year	2-year college	52%
CITY OF CHICAGO - WRIGHT COLLEGE	1098	7.0%	2-Year	2-year college	16%
UNIVERSITY OF ILLINOIS @ URBANA	939	6.0%	4-Year	Very Selective	65%
CITY OF CHICAGO - MALCOLM X COLLEGE	855	5.4%	2-Year	2-year college	44%
NORTHEASTERN ILLINOIS UNIVERSITY	548	3.5%	4-Year	Non-Selective	70%
CITY OF CHICAGO - RICHARD J. DALEY COLLEGE	449	2.9%	2-Year	2-year college	96%
NATIONAL LOUIS UNIVERSITY	407	2.6%	4-Year	Non-Selective	N/A
CITY OF CHICAGO - HARRY S TRUMAN COLLEGE	346	2.2%	2-Year	2-year college	17%
LOYOLA UNIVERSITY CHICAGO	343	2.2%	4-Year	Selective	46%
CITY OF CHICAGO - KENNEDY-KING COLLEGE	342	2.2%	2-Year	2-year college	20%
WESTERN ILLINOIS UNIVERSITY	324	2.1%	4-Year	Somewhat Selective	37%
DEPAUL UNIVERSITY	314	2.0%	4-Year	Selective	45%
ILLINOIS STATE UNIVERSITY	292	1.9%	4-Year	Somewhat Selective	45%
NORTHERN ILLINOIS UNIVERSITY	265	1.7%	4-Year	Somewhat Selective	36%
CITY OF CHICAGO - OLIVE-HARVEY COLLEGE	171	1.1%	2-Year	2-year college	13%
TRITON COLLEGE	164	1.0%	2-Year	2-year college	13%
SAINT XAVIER UNIVERSITY	158	1.0%	4-Year	Somewhat Selective	73%
UNIVERSITY OF MICHIGAN	141	0.9%	4-Year	Very Selective	98%
NORTH PARK UNIVERSITY	134	0.9%	4-Year	Somewhat Selective	7%
COLUMBIA COLLEGE CHICAGO	128	0.8%	4-Year	Non-Selective	32%
MORaine VALLEY COMMUNITY COLLEGE	127	0.8%	2-Year	2-year college	53%
SOUTHERN ILLINOIS UNIVERSITY CARBONDALE	123	0.8%	4-Year	Somewhat Selective	34%
EASTERN ILLINOIS UNIVERSITY	122	0.8%	4-Year	Somewhat Selective	76%
NORTHWESTERN UNIVERSITY	118	0.8%	4-Year	Very Selective	100%
DOMINICAN UNIVERSITY	109	0.7%	4-Year	Somewhat Selective	77%
CENTRAL STATE UNIVERSITY-OH	98	0.6%	4-Year	Somewhat Selective	52%
ALABAMA A & M UNIVERSITY	97	0.6%	4-Year	Non-Selective	23%
LINCOLN COLLEGE	91	0.6%	2-Year	2-year college	54%
OAKTON COMMUNITY COLLEGE	90	0.6%	2-Year	2-year college	17%
BRADLEY UNIVERSITY	89	0.6%	4-Year	Selective	46%
UNIVERSITY OF WISCONSIN - MADISON	77	0.5%	4-Year	Selective	65%
ROOSEVELT UNIVERSITY	76	0.5%	4-Year	Selective	28%
ILLINOIS INSTITUTE OF TECHNOLOGY	76	0.5%	4-Year	Very Selective	45%
ALBION COLLEGE	71	0.5%	4-Year	Selective	61%
HOWARD UNIVERSITY	69	0.4%	4-Year	Somewhat Selective	40%
LINCOLN UNIVERSITY	65	0.4%	4-Year	Non-Selective	18%
CONCORDIA UNIVERSITY	63	0.4%	4-Year	Somewhat Selective	36%
MORTON COLLEGE	61	0.4%	2-Year	2-year college	20%
MARQUETTE UNIVERSITY	58	0.4%	4-Year	Selective	9%
CENTRAL MICHIGAN UNIVERSITY	58	0.4%	4-Year	Somewhat Selective	77%
INDIANA STATE UNIVERSITY	57	0.4%	4-Year	Non-Selective	31%
ROBERT MORRIS UNIVERSITY	57	0.4%	4-Year	Somewhat Selective	55%
UNIVERSITY OF CHICAGO	56	0.4%	4-Year	Very Selective	67%
CHICAGO STATE UNIVERSITY	54	0.3%	4-Year	Somewhat Selective	13%
SOUTHERN ILLINOIS UNIVERSITY EDWARDSVILL	53	0.3%	4-Year	Somewhat Selective	35%
ILLINOIS CENTRAL COLLEGE	50	0.3%	2-Year	2-year college	4%
CLARK ATLANTA UNIVERSITY	46	0.3%	4-Year	Somewhat Selective	29%
GRAND VALLEY STATE UNIVERSITY	45	0.3%	4-Year	Selective	42%
KNOX COLLEGE	44	0.3%	4-Year	Selective	88%

\*The graduation rate of the college represents the college's overall graduation rate for 2012. It tracks the progress of students who began their studies as full-time, first-time degree- or certificate-seeking students to see if they complete a degree or other award such as a certificate within 150% of "normal time" for completing the program in which they are enrolled. Note that not all students at the institution are tracked for these rates. Students who have already attended another postsecondary institution, or who began their studies on a part-time basis, are not tracked for this rate. NA (Not applicable) - Graduation rate is not applicable to institutions that do not have full-time, first-time degree-seeking undergraduate students in the applicable cohort year or the financial aid year.

## Top 100 Colleges Attended by 2017 CPS Graduates

## 51-100

Name of College	# of Graduates Enrolled	% of All College Enrollees	Type of College	Selectivity Level	Graduation Rate of College*
UNIVERSITY OF ILLINOIS @ SPRINGFIELD	39	0.2%	N/A	N/A	73%
EAST WEST UNIVERSITY	36	0.2%	4-Year	Non-Selective	48%
PARKLAND COLLEGE	35	0.2%	2-Year	2-year college	16%
SCHOOL OF THE ART INSTITUTE OF CHICAGO	35	0.2%	N/A	N/A	59%
ELMHURST COLLEGE	34	0.2%	4-Year	Somewhat Selective	42%
MONMOUTH COLLEGE	34	0.2%	4-Year	Somewhat Selective	76%
AURORA UNIVERSITY	34	0.2%	4-Year	Somewhat Selective	75%
UNIVERSITY OF DUBUQUE	33	0.2%	4-Year	Somewhat Selective	31%
DEPAUW UNIVERSITY	31	0.2%	4-Year	Very Selective	49%
KISHWAUKEE COLLEGE	31	0.2%	2-Year	2-year college	5%
TENNESSEE STATE UNIVERSITY	30	0.2%	N/A	N/A	N/A
INDIANA UNIVERSITY BLOOMINGTON	30	0.2%	4-Year	Selective	88%
TOUGALOO COLLEGE	29	0.2%	4-Year	Non-Selective	32%
ST. OLAF COLLEGE	29	0.2%	4-Year	Very Selective	83%
JACKSON STATE UNIVERSITY	29	0.2%	4-Year	Somewhat Selective	30%
GOVERNORS STATE UNIVERSITY-UNDERGRADS	27	0.2%	N/A	N/A	N/A
KALAMAZOO COLLEGE	26	0.2%	4-Year	Very Selective	90%
VALPARAISO UNIVERSITY	26	0.2%	4-Year	Selective	42%
UNIVERSITY OF IOWA	26	0.2%	4-Year	Selective	63%
BALL STATE UNIVERSITY	26	0.2%	4-Year	Somewhat Selective	58%
COE COLLEGE	26	0.2%	4-Year	Selective	42%
UNIVERSITY OF MISSOURI-COLUMBIA	25	0.2%	4-Year	Selective	87%
WASHINGTON UNIVERSITY	23	0.1%	4-Year	Very Selective	100%
HOPE COLLEGE	23	0.1%	4-Year	Selective	47%
MOREHOUSE COLLEGE	23	0.1%	4-Year	Somewhat Selective	56%
PHILANDER SMITH COLLEGE	22	0.1%	4-Year	Non-Selective	30%
PAUL QUINN COLLEGE	22	0.1%	4-Year	Non-Selective	15%
IOWA STATE UNIVERSITY	22	0.1%	4-Year	Selective	62%
XAVIER UNIVERSITY OF LOUISIANA	21	0.1%	4-Year	Somewhat Selective	55%
NEW YORK UNIVERSITY	21	0.1%	4-Year	Very Selective	82%
HAMPTON UNIVERSITY	21	0.1%	4-Year	Somewhat Selective	61%
SOUTH SUBURBAN COLLEGE	20	0.1%	2-Year	2-year college	55%
AUGUSTANA COLLEGE	20	0.1%	4-Year	Selective	47%
PURDUE UNIVERSITY - WEST LAFAYETTE	20	0.1%	4-Year	Selective	64%
UNIVERSITY OF SOUTHERN CALIFORNIA	19	0.1%	4-Year	Very Selective	67%
DENISON UNIVERSITY	19	0.1%	4-Year	Very Selective	9%
BELOIT COLLEGE	19	0.1%	4-Year	Very Selective	49%
HARRIS-STOWE STATE UNIVERSITY	19	0.1%	N/A	N/A	44%
IOWA WESLEYAN UNIVERSITY	18	0.1%	4-Year	Somewhat Selective	96%
POMONA COLLEGE	18	0.1%	4-Year	Very Selective	92%
LAKE FOREST COLLEGE	18	0.1%	4-Year	Selective	63%
TUSKEGEE UNIVERSITY	18	0.1%	4-Year	Non-Selective	34%
LEWIS UNIVERSITY	17	0.1%	4-Year	Somewhat Selective	79%
COLLEGE OF WOOSTER	17	0.1%	4-Year	Very Selective	49%
CARTHAGE COLLEGE	17	0.1%	4-Year	Somewhat Selective	77%
OLIVET NAZARENE UNIVERSITY UG	17	0.1%	4-Year	Somewhat Selective	40%
LANE COLLEGE	16	0.1%	N/A	N/A	N/A
WESTERN MICHIGAN UNIVERSITY	16	0.1%	4-Year	Somewhat Selective	57%
UNIVERSITY OF KENTUCKY	16	0.1%	4-Year	Somewhat Selective	59%
COLLEGE OF DUPAGE	16	0.1%	2-Year	2-year college	52%

\*The graduation rate of the college represents the college's overall graduation rate for 2012. It tracks the progress of students who began their studies as full-time, first-time degree- or certificate-seeking students to see if they complete a degree or other award such as a certificate within 150% of "normal time" for completing the program in which they are enrolled. Note that not all students at the institution are tracked for these rates. Students who have already attended another postsecondary institution, or who began their studies on a part-time basis, are not tracked for this rate. NA (Not applicable) - Graduation rate is not applicable to institutions that do not have full-time, first-time degree-seeking undergraduate students in the applicable cohort year or the financial aid year.