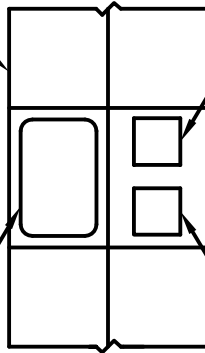


G4000 OR EQUIVALENT DIVIDED
SURFACE MOUNT METAL
RACEWAY (TYP.)

BLANK INSERT
(COLOR TO MATCH RACEWAY)

BLANK FACEPLATE SURFACE
MOUNT METAL RACEWAY
(COLOR TO MATCH RACEWAY)

RJ45 TELEPHONE OUTLET (WHITE)



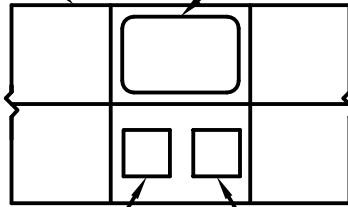
VERTICAL MOUNTED

G4000 OR EQUIVALENT DIVIDED
SURFACE MOUNT METAL
RACEWAY (TYP.)

BLANK FACEPLATE SURFACE MOUNT METAL RACEWAY
(COLOR TO MATCH RACEWAY)

RJ45 TELEPHONE OUTLET (WHITE)

BLANK INSERT
(COLOR TO MATCH RACEWAY)



HORIZONTAL MOUNTED

NOTES:

1. HORIZONTALLY SURFACE MOUNT METAL RACEWAY WILL HAVE COMMUNICATIONS DEVICES MOUNTED IN THE LOWER SECTION AND IG DUPLEX RECEPTACLE MOUNTED IN UPPER SECTION OF THE DIVIDED RACEWAY. CROSS OVER FITTING WILL BE INSTALLED WHEN CABLING BECOMES INVERTED DUE TO ROUTING.
2. VERTICALLY SURFACE MOUNT METAL RACEWAY WILL HAVE COMMUNICATIONS DEVICES MOUNTED IN THE RIGHT SECTION AND IG DUPLEX RECEPTACLES MOUNTED IN THE LEFT SECTION.

CHICAGO PUBLIC SCHOOLS																	
CAPITAL IMPROVEMENT PROGRAM																	
INFORMATION TECHNOLOGY SERVICES																	
INFRASTRUCTURE STANDARDS																	
TYPICAL VOICE																	
DROP DETAIL																	
<table border="1" style="width: 100%; border-collapse: collapse;"> <tr> <td style="width: 30%;"></td> <td style="width: 20%;">DESIGNED CPS</td> <td rowspan="4" style="width: 20%;"></td> <td rowspan="4" style="width: 30%;"></td> </tr> <tr> <td></td> <td>DRAWN CPS</td> </tr> <tr> <td></td> <td>CHECKED CPS</td> </tr> <tr> <td></td> <td>APPROVED CPS</td> </tr> <tr> <td colspan="2">NO. DATE</td> <td>REVISION</td> <td>BY</td> </tr> </table>		DESIGNED CPS				DRAWN CPS		CHECKED CPS		APPROVED CPS	NO. DATE		REVISION	BY	PROJECT NUMBER	SCALE NONE	DATE 08/28/08
	DESIGNED CPS																
	DRAWN CPS																
	CHECKED CPS																
	APPROVED CPS																
NO. DATE		REVISION	BY														
			SHEET NO. ED.009														